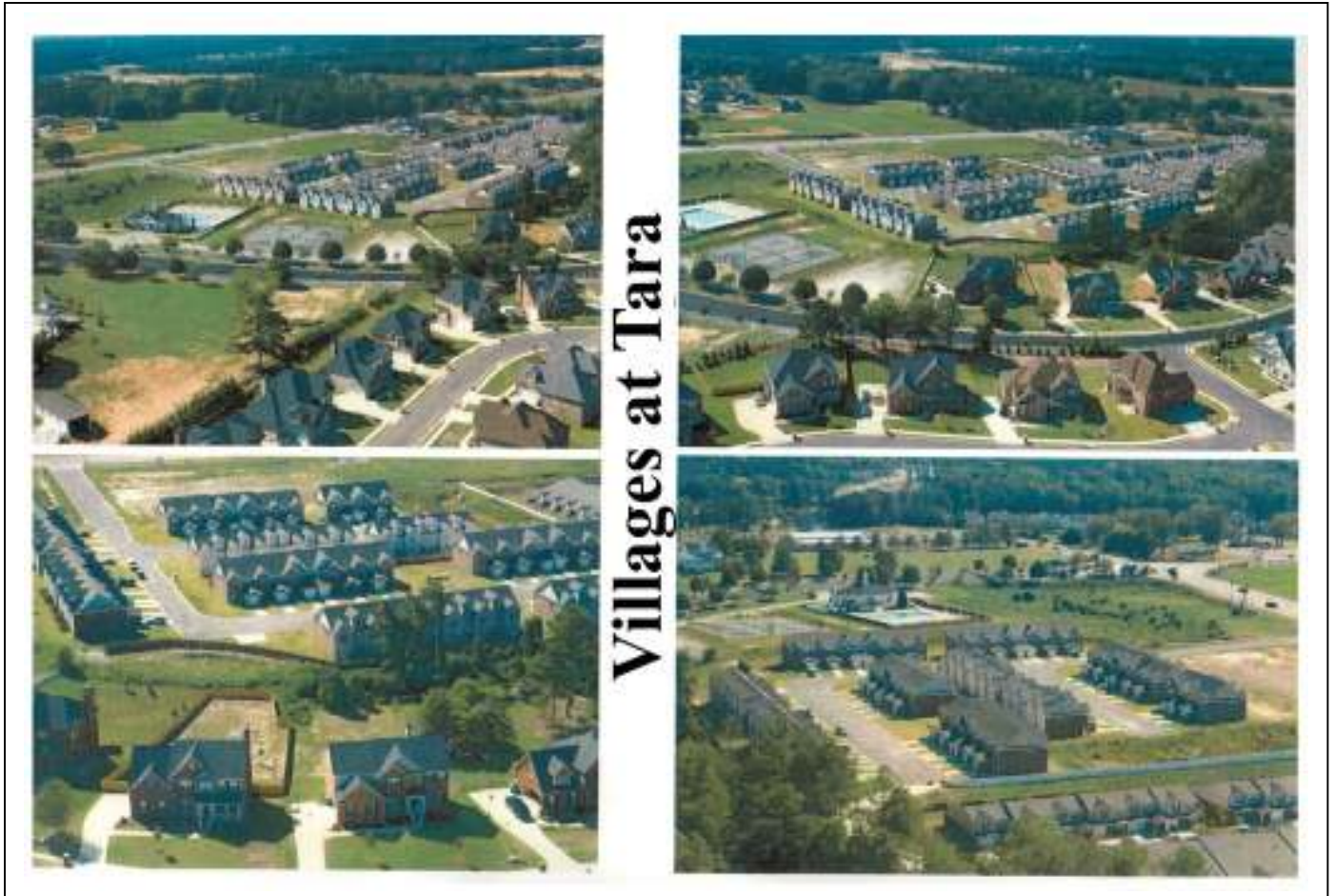


# THE VILLAGES AT TARA

Loganville, GA



Each Century 21 Office is independently owned and operated.



## CONTACT INFO:

**Collis Clovie**

Century 21 Intown New Homes Division

**(404) 242-9070 Direct**

(404) 355-2833 Office

(404) 351-9028 Fax

[www.c21intown.com](http://www.c21intown.com)

# STANDARD FEATURES

## 3-Level Luxury Townhomes

### EXTERIOR

Patio

### KITCHEN

Breakfast Area  
Walk-In Pantry  
Wood Cabinets

### INTERIOR

3-Level Townhome  
Laundry Closet

### BATH

Separate Tub and Shower

### FLOORING

Hardwood Floors  
Carpet

### ENERGY SAVING FEATURS

Clock Thermostat  
Electric Water Heater  
Ceiling Fans

### Appliances

Hooded Electric Oven Range  
Refrigerator  
Dishwasher

### Parking

1-Car Garage

### Rooms

Bonus Room  
Separate Living Room  
Separate Dining Room

### Air Conditioning

Central Electric Air  
Central Electric Heat  
Zoned Dual

# COMMUNITY INFORMATION

## SCHOOLS

<b>Elementary School</b> -Loganville .....	770-466-4834
<b>Middle School</b> - Loganville .....	770-466-0380
<b>High School</b> - Loganville .....	770-466-4892
Loganville Christian Academy .....	770-554-9888
Athens Area Technical Institute .....	770-355-5000
Board of Education .....	770-266-4520

## MEDICAL

Ambulance Service/Emergency: 911	
Walton County Fire: 911	
Walton County Police: 911	
Rescue: 911	
Walton Medical Center .....	770-267-8461

## UTILITIES

<b>Electricity</b> – Georgia Power .....	888-660-5890
<b>Gas</b> – Georgia Natural Gas .....	888-442-7489

## PARKS

Meridian Park  
West Walton Park

# AREA MAP



## CITY OF LOGANVILLE

The City of Loganville is conveniently situated within the busy thoroughfare of Highway 78 between Atlanta and Athens, and Highway 20 between Lawrenceville and Conyers, and is minutes from major employment centers in Gwinnett County. Loganville is a thriving community offering the best of traditional heritage combined with well-planned, modern development. Although expanding in all directions physically and economically, the city has succeeded in maintaining a small-town family atmosphere still offering true Southern Hospitality as evidenced by a recent CNN poll which named Loganville the 39<sup>th</sup> best place to live in the United States.

Loganville is proud to be known as one of the fastest growing cities in the state with a population increase of 63% since 2000. Projections show that this area, within a five-mile radius, will grow an additional 28 percent by 2010. The city has one of the best school systems in the state of Georgia. Loganville Primary, Elementary, Middle and High School have been selected as National Schools of Excellence. Drawn by the exceptional schools with an affordable cost of living, new residents have driven the average home price to nearly \$242,000 an increase of \$47,000 since 2004. Rising prices and instability in the sub-prime lending market is creating increasing demand for rental unit in this hot market.

# DESIGN & FLOORPLANS



FRONT ELEVATION

NOTES

JC Construction & Builders, LLC  
 2666 Lee Road, Nashville, GA 30029  
 770-730-1330

CAD DESIGNS  
 81 EAST LAKE DR NE  
 ATLANTA, GA 30317  
 (770) 424-9907 (7) 888 910-2664  
 CADDESIGN@YAHOO.COM

PROJECT NAME

DRAWING TITLE

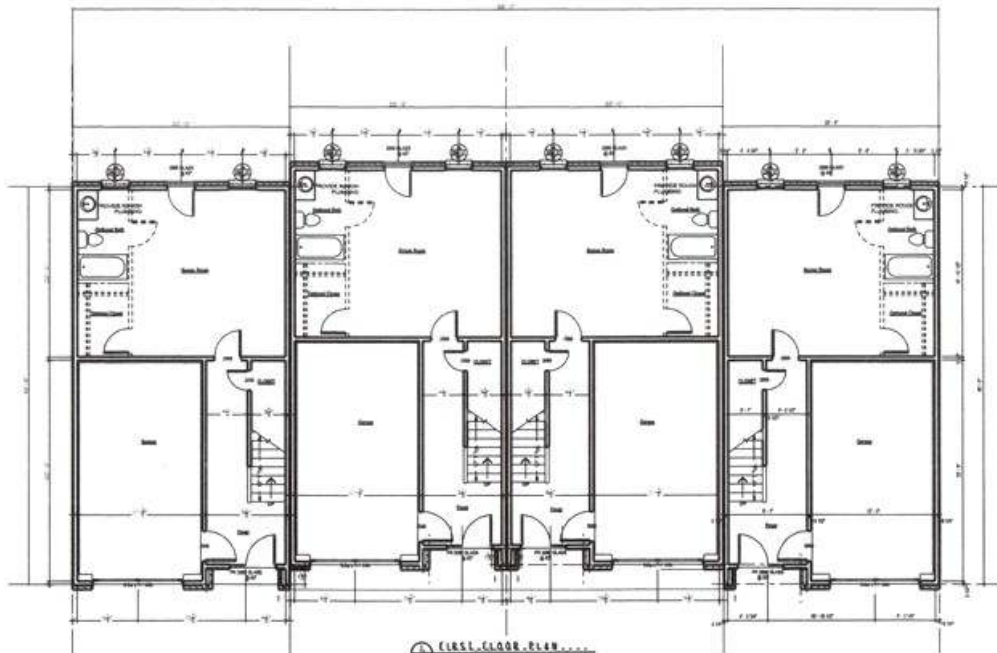
DATE

SHEET NO.

PRELIMINARY

02/16/08

BretfordElev\_half2D.dwg 2/22/2008 1:02:53 PM



FIRST FLOOR PLAN

NOTES

JC Construction & Builders, LLC  
 2666 Lee Road, Nashville, GA 30029  
 770-730-1330

CAD DESIGNS  
 81 EAST LAKE DR NE  
 ATLANTA, GA 30317  
 (770) 424-9907 (7) 888 910-2664  
 CADDESIGN@YAHOO.COM

PROJECT NAME

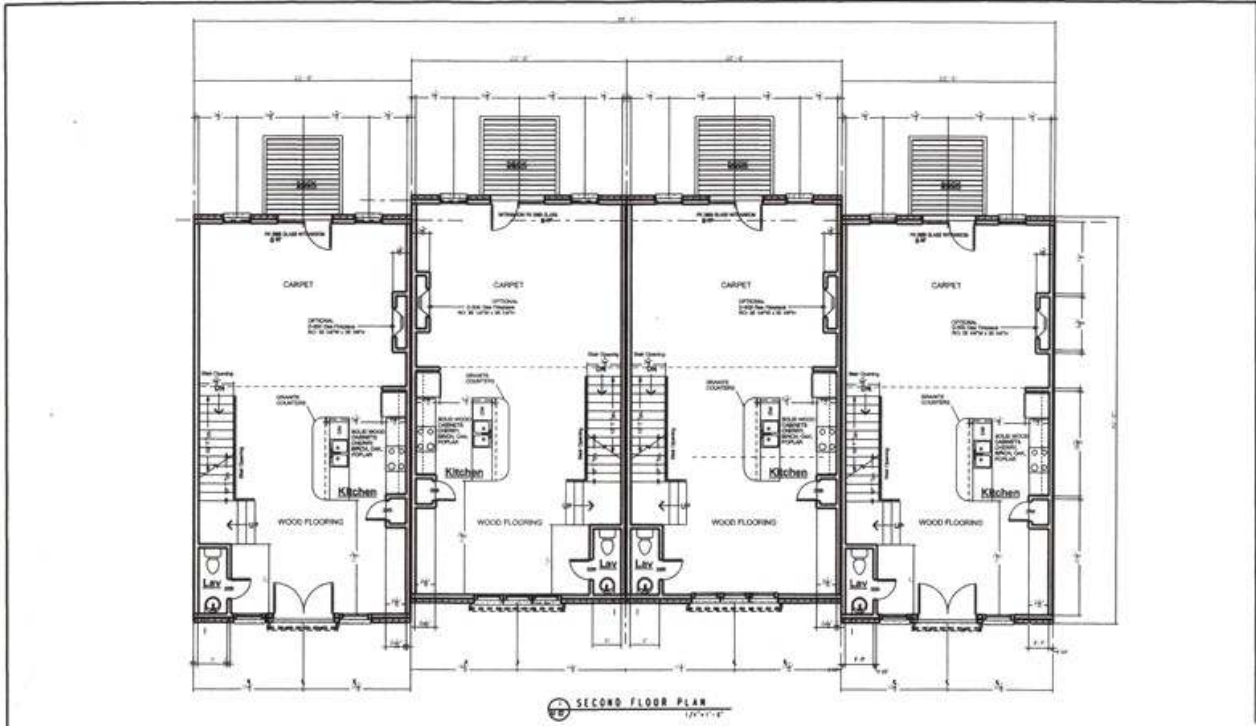
DRAWING TITLE

DATE

SHEET NO.

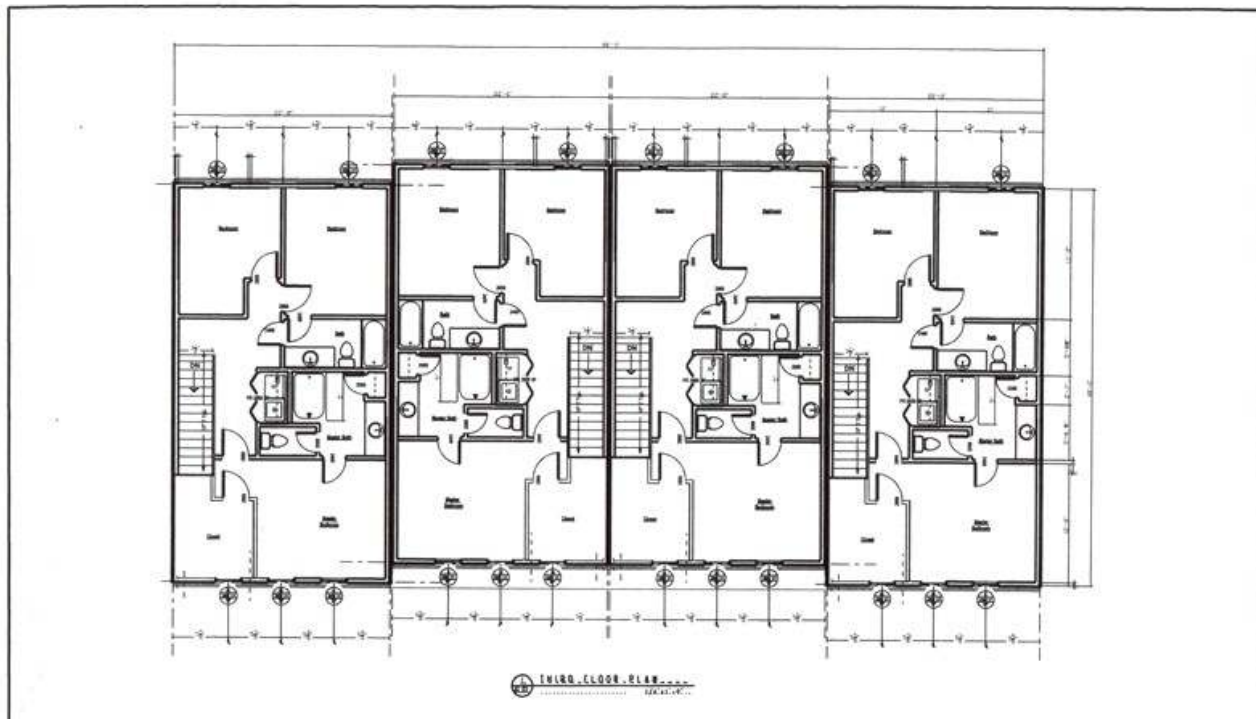
PRELIMINARY

02/16/08



SECOND FLOOR PLAN  
1/2" = 1'-0"

NOTES	<b>JC Construction &amp; Builders, LLC</b> 2544 Lee Road, Suwanee, GA 30029 (770) 764-1224	<b>CAD DESIGNS</b> 31 EAST LAKE DR NE ATLANTA, GA 30317 (770) 424-2860 (770) 486-510-2864 CADDESIGNSA@YAHOO.COM	PROJECT NAME  PRELIMINARY	DRAWING TITLE SECOND FLOOR PLAN
				SHEET NUMBER AT 02



THIRD FLOOR PLAN  
1/2" = 1'-0"

NOTES	<b>JC Construction &amp; Builders, LLC</b> 2544 Lee Road, Suwanee, GA 30029 (770) 764-1224	<b>CAD DESIGNS</b> 31 EAST LAKE DR NE ATLANTA, GA 30317 (770) 424-2860 (770) 486-510-2864 CADDESIGNSA@YAHOO.COM	PROJECT NAME  PRELIMINARY	DRAWING TITLE THIRD FLOOR PLAN
				SHEET NUMBER AT 03